

# Apply to study for a Bachelor of Arts degree.

Competency-based degree scholarship covering tuition fees.



INNOVATIVE

ACCESSIBLE

## Study towards a:

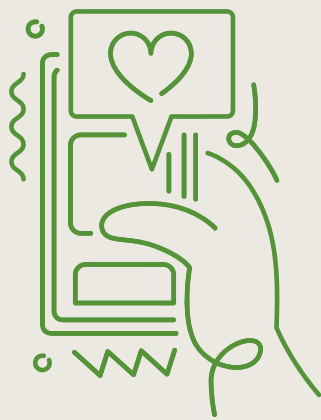
**Associate of Sciences** (Diploma equivalent)

(Max. study time: 2 years)

## Bachelor of Arts in either:

1. Operations and Logistics
2. Communications Management
3. Healthcare Management

(Max. study time: 2 years)



Scalabrini Centre's UpLearn project in collaboration with Southern New Hampshire University's Global Education Movement (SNHU-GEM) is offering you the chance at a tuition-based Scholarship to study a competency-based (CBE) degree.



[More about SNHU-GEM](#)

## Application Process

- Fill out the registration form completely.
- Pass the Baseline Assessment
- Attend a 7-week Bridging Course called Continuous Learning Space (CLS) where your eligibility for the scholarship will be assessed
- Participate in a thorough interview process.



## What is CBE?

SNHU's College for America offers competency-based education, which prioritizes skill development over time spent learning. The curriculum consists of real-world projects that count towards skills-based goals.



Do you meet the minimum requirements?

## Entry Criteria

- Minimum Grade 12 Certificate or equivalent (any country)
- Valid Documentation to reside in South Africa
- Live in Cape Town and surrounds

## Apply Here!

**Scan Me:**



[UpLearn Application Form](#)

For more information:

 [meddy@scalabrini.org.za](mailto:meddy@scalabrini.org.za)

 021 465 6433

 47 Commercial Street, Cape Town

# 7-Week Bridging Course: CLS Programme Overview

The CLS programme is designed to provide students with critical skills in academic writing, research, digital literacy, and problem-solving – all essential for success in further studies. Additionally, students will learn how to apply critical thinking and problem-solving techniques to make informed decisions.

## Course Schedule

Duration: 7 weeks

Classes are twice a week and in-person: (Tuesday and Thursday → 08h30 - 16h30)

## Frequently Asked Questions



### 1. How will we communicate with you?

We will contact you via email. Please always check your emails on a regular basis.

### 2. When do the applications open?

Applications are always open. Click on link to complete the registration form.

### 3. When does CLS start?

In 2024, the course will have four starting dates: January, April, June and September.

### 4. When does the SNHU-GEM Scholarship Programme start?

Registration takes place quarterly, with new cohorts starting in January, April, July and October.

### 5. What does the bursary cover?

This is a tuition based scholarship, meaning that your tuition fees are paid. All other costs are at your own expense.

### 6. What is UpLearn?

UpLearn forms part of the Integration Pathways programme at Scalabrini Centre of Cape Town. This higher education initiative is partnered with the Southern New Hampshire-Global Education Movement (SNHU-GEM) Scholarship Programme. Through the UpLearn project, people on the move in Cape Town, have access to a competency-based tertiary education programme which aims to develop future leaders by facilitating pathways to self-sufficiency. This is in line with the UNHCR's goal of enrolling 15% of refugees by 2030 into tertiary education.

UpLearn provides academic support and resources to students. This includes academic advice and planning, access to a computer lab with on-site tutors, group coaching and teaching sessions in order to develop independent thinkers and learners. Furthermore, access to employment support services through the Employment Access project prepares and equips students to navigate the world of work following graduation.

## Apply Here!

Scan  
Me:



[UpLearn Application Form](#)

For more information:



[meddy@scalabrini.org.za](mailto:meddy@scalabrini.org.za)



47 Commercial Street, Cape Town



021 465 6433